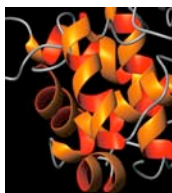
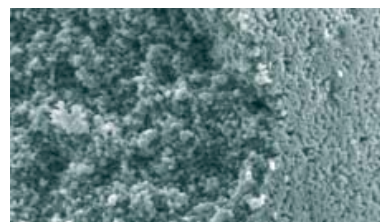


■ Kromasil 300 Å タンパク・ペプチド分離用充填剤



KROMASIL300Å充填剤は8-10kD以上のタンパク試料の分離に最適です。細孔径分布が狭く、タンパクやペプチド分子に対するクロマトグラフィー特性に優れています。

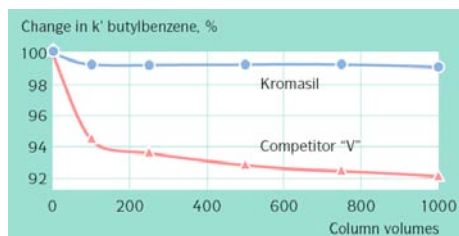
右図の電子顕微鏡写真より、充填剤表面と内部の細孔は規則性の高い均一な構造であることがわかります。



FE-SEM picture of a cut through a KROMASIL300Å 35,000× magnification,

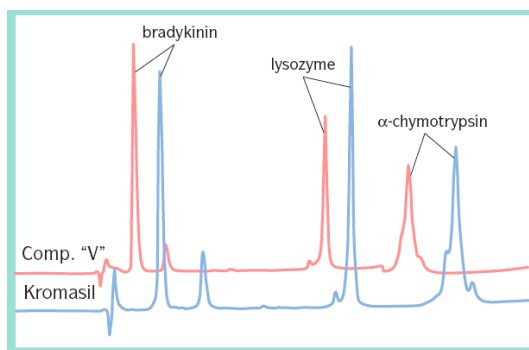
高い機械的強度と化学的安定性

100Å充填剤と同様にKROMASIL300Å充填剤は高い機械的強度を持ち、繰り返しの充填を行っても微粉末の発生を最小限に抑えることが可能です。スプリングカラム等の軸圧縮カラムに最適です。



酸性移動相中の安定性

Conditions: Mobile phase: ACN/H₂O/TFA = 50/50/1
Flow rate: 2 ml/min. Temperature: 20°C



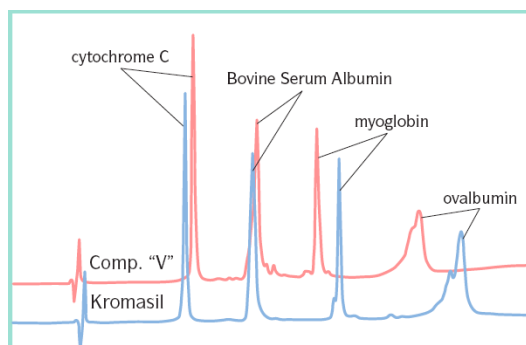
ペプチド・タンパク試料の分離

Conditions: Column: 4.6 mm × 250 mm Mobile phase: A: ACN/H₂O/TFA = 5/95/0.1 B: ACN/H₂O/TFA = 90/10/0.1 Gradient: 25%–75% ACN in 25 min. Flow rate: 1.0 ml/min. Temperature: 20°C Detection: UV at 220 nm

中性及びアルカリ性溶液中の安定性

Columns were purged, and the chemical stability was monitored by analyzing the concentration of silicon in the effluent using AAS.

Material	Leakage of Si at:	
	neutral pH	high pH
Competitor "V"	42 ppm	total dissolution
Kromasil	2 ppm	50 ppm



タンパク試料の分離

Conditions: Column: 4.6 mm × 250 mm Mobile phase: A: ACN/H₂O/TFA = 5/95/0.1 B: ACN/H₂O/TFA = 90/10/0.1 Gradient: 30%–70% ACN in 30 min. Flow rate: 1.0 ml/min. Temperature: 20°C Detection: UV at 220 nm

Chemcopak

CHEMCOPAK	内径 (mm)	1.0		2.1		3.0		4.0		4.6	
		長さ (mm)	100 150	100 125 150	100 125 150 200	250 300	100 125 150 200	250 300	100 125 150	200 250 300	
KROMASIL											

充填剤名	粒径 (um)	充填剤コード	¥価格							
Kromasil 60-5-SIL	5	K6S5	60,000	50,000	43,000	53,000	40,000	50,000	40,000	50,000
Kromasil 60-10-SIL	10	K6S10	60,000	50,000	43,000	53,000	40,000	50,000	40,000	50,000
Kromasil 60-10-CN	10	K6C10	60,000	50,000	43,000	53,000	40,000	50,000	40,000	50,000
Kromasil 100-5-NH2	5	KN5	60,000	50,000	43,000	53,000	40,000	50,000	40,000	50,000
Kromasil 100-10-C4	10	KC410	60,000	50,000	43,000	53,000	40,000	50,000	40,000	50,000
Kromasil 100-5-C8	5	KC85	60,000	50,000	43,000	53,000	40,000	50,000	40,000	50,000
Kromasil 100-10-C8	10	KC810	60,000	50,000	43,000	53,000	40,000	50,000	40,000	50,000
Kromasil 100-5-C18	5	KC185	60,000	50,000	43,000	53,000	40,000	50,000	40,000	50,000
Kromasil 100-10-C18	10	KC1810	60,000	50,000	43,000	53,000	40,000	50,000	40,000	50,000
Kromasil 300-5-C4	5	KW45	60,000	50,000	43,000	53,000	40,000	50,000	40,000	50,000
Kromasil 300-5-C18	5	KW185	60,000	50,000	43,000	53,000	40,000	50,000	40,000	50,000

※ その他のサイズについてはお問い合わせ下さい。

KROMASIL 3.5um充填剤

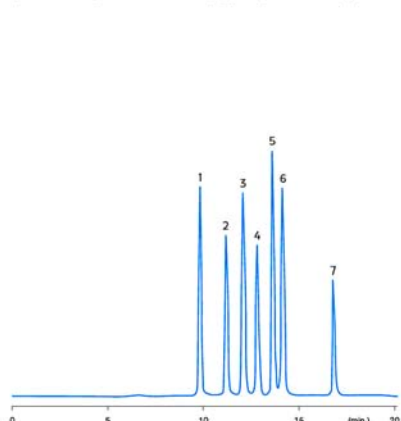
Chemcopak

CHEMCOPAK	内径 (mm)	1.0	2.1	3.0	4.0	4.6
KROMASIL	長さ (mm)	50	50	50	50	50
		100	125	125	125	100
		150	150	150	150	150

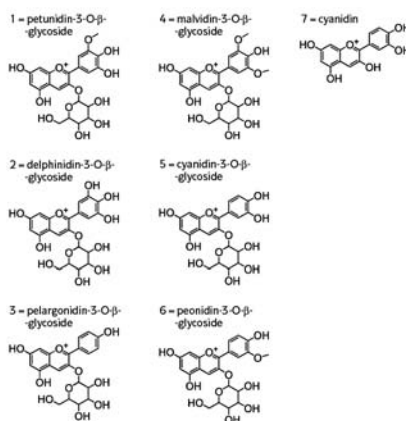
充填剤名	粒径 (um)	充填剤コード	¥価格									
Kromasil 100-3.5-C4	3.5	KC43	69,000	60,000	60,000	53,000	53,000	50,000	50,000	50,000	50,000	50,000
Kromasil 100-3.5-C8	3.5	KC83	69,000	60,000	60,000	53,000	53,000	50,000	50,000	50,000	50,000	50,000
Kromasil 100-3.5-C18	3.5	KC183	69,000	60,000	60,000	53,000	53,000	50,000	50,000	50,000	50,000	50,000

Anthocyanidins

Separation of cyanidin from 3-O-β-glycosylated anthocyanidins. (ref. 347)



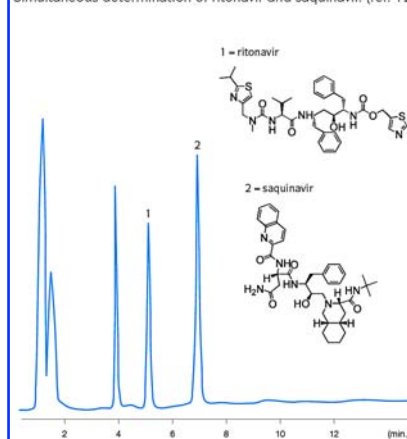
Phase: Kromasil 100 Å, 5 µm, C18
 Column: 4.6 x 250 mm
 Temperature: 23 °C
 Eluent A: HCOOH:water (1:10; v:v)
 Eluent B: HCOOH:water:MeOH (1:9:10; v:v:v)
 Gradient: 0% - 60% A in 5 min., 60% - 45% A in 5 min., 45% - 0% A in 6 min., 0% A in 10 min.



Flow rate: 1.2 ml/min.
 Detection: 520 nm

Anti-HIV

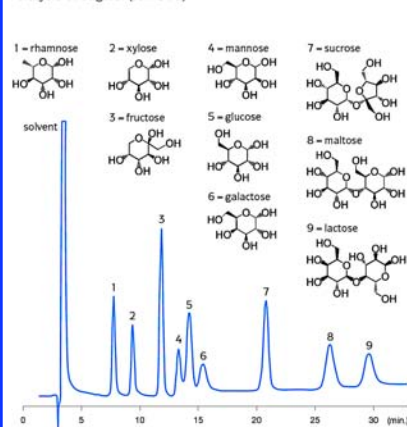
Simultaneous determination of ritonavir and saquinavir. (ref. 126)



Phase: Kromasil 100 Å, 5 µm, C8
 Column: 4.6 x 150 mm
 Eluent: ACN : 5 mM potassium phosphate monobasic buffer, pH 8 (55:45; v:v)
 Flow rate: 1 ml/min.
 Detection: UV 240 nm

Sugars

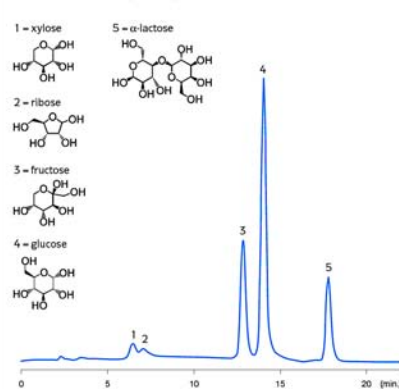
Analysis of sugars. (ref. 315)



Phase: Kromasil 100 Å, 5 µm, NH2
 Column: 4.6 x 250 mm
 Eluent: ACN:water (75:25; v:v)
 Flow rate: 1 ml/min.
 Detection: RI

Sugars, phosphorylated

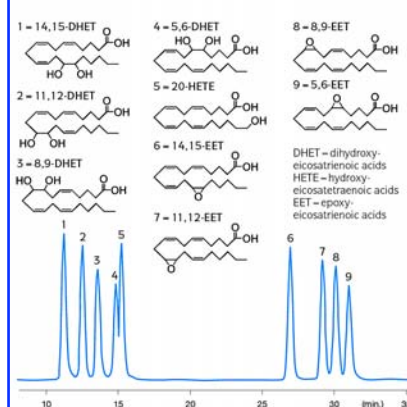
Determination of reducing sugars in beef sirloin, with post-column reduction. (ref. 27)



Phase: Kromasil 100 Å, 5 µm, NH2
 Column: 4 x 250 mm
 Eluent: ACN:water (85:15; v:v) at pH 4.8
 Flow rate: 1.4 ml/min.
 Post column: Post-column reduction at 95 °C with tetrazolium blue (0.7 mM in distilled water and 0.16 M NaOH, 15% EtOH, 0.047M Na-K-tartrate, pH 12.7) before detection.
 Detection: 550 nm

Cytochrome P450 metabolites

Analysis of cytochrome P450 metabolites of arachidonic acid. (ref. 10)



Phase: Kromasil 100 Å, 5 µm, C18
 Column: 2 x 250 mm
 Eluent: water/ACN with 0.005% HAc
 Gradient: 0 min. 60% ACN, 30 min. 80% ACN, 35 min. 100% ACN 40 min. 100% ACN
 Flow rate: 0.2 ml/min.
 Detection: ESI-MS



KROMASILバルク充填剤

バルク充填剤も販売しています。価格についてはお問い合わせ下さい。

- ・ C18, C8, C4, NH2, CN, Phenyl, Diol, Silica, キラル
- ・ 細孔径 : 6, 10, 30 nm
- ・ 粒子径 : 7, 10, 13, 16µm

